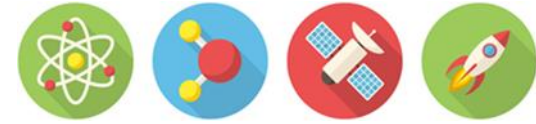




Prince William County Schools
Grade Six Science
Suggested Pacing Guide B
2019 – 2020



FIRST QUARTER (47 DAYS)	SECOND QUARTER (43 DAYS)	THIRD QUARTER (43 DAYS)	FOURTH QUARTER (47 DAYS)
<p style="text-align: center;">August 26-November 1</p> <p>Introduction to Grade 6 Science & Science Problem-Solving (2 weeks) 6.1</p> <ul style="list-style-type: none"> ➤ Classroom procedures and laboratory safety ➤ Methods of scientific problem-solving and experimental design ➤ The Nature of Science (NOS) ➤ Science process skills (to include metric measurement) <p>Unit 5 Solar System/E-M-S Relationships (6 weeks) 6.2, 6.3, 6.1</p> <ul style="list-style-type: none"> ➤ Sun, planets and their moons ➤ Meteors, asteroids, comets ➤ Relative size and distance among planets ➤ Role of gravity ➤ Unique properties of Earth ➤ Rotation and revolution ➤ Earth's day/night cycle ➤ Phases of the moon ➤ Earth's tilt and seasons ➤ Tides ➤ Space technology and exploration ➤ Science process skills (<i>infused</i>) <p>Aug 30, Sept. 2 – Labor Day: No School Oct. 14, Nov. 5 and 6 – In-service/Workdays</p>	<p style="text-align: center;">November 6-January 24</p> <p>Unit 1 Matter (3 weeks) 6.5, 6.1</p> <ul style="list-style-type: none"> ➤ Atomic structure ➤ Elements ➤ Chemical symbols, bonds, formulas, and equations ➤ Science process skills (<i>infused</i>) <p>Unit 3 Energy Forms & Transformation (4 weeks) 6.4, 6.9a-b,d, 6.1</p> <ul style="list-style-type: none"> ➤ Sun's role in formation of energy sources ➤ Earth's energy budget ➤ Energy transformations ➤ Distribution of energy by radiation, conduction, and convection ➤ Importance of energy transformations in energy usage ➤ Science process skills (<i>infused</i>) <p><i>Note: Instructional time during this semester is reserved for review and assessment and to accommodate inclement weather or other events that might impact pacing.</i></p> <p>Nov. 11- Veterans' Day: No School Nov. 27-29 – Fall Break Dec. 23-Jan 3 – Winter Break Jan 20 – Martin Luther King Birthday: No School Jan. 27 – In-service/Workday</p>	<p style="text-align: center;">January 28-March 27</p> <p>Unit 4 Weather & Climate (8 weeks) 6.6c, e, 6.7, 6.9c, 6.1</p> <ul style="list-style-type: none"> ➤ <u>Composition of air</u> ➤ <u>Physical characteristics of air (temperature, pressure, humidity)</u> ➤ <u>Structure of the atmosphere</u> ➤ <u>Natural and human-caused changes in the atmosphere: air quality</u> ➤ Atmospheric measures (temperature, pressure, humidity) and their relationship to weather conditions ➤ Water cycle & types of precipitation ➤ Role of energy distribution in weather-related phenomena (hurricanes, thunderstorms) ➤ Weather map interpretation ➤ Role of water in moderating climate ➤ Science process skills (<i>infused</i>) <p><i>Note: Instructional time during this semester is reserved for review and assessment and to accommodate inclement weather or other events that might impact pacing.</i></p> <p>Feb. 17 – Presidents' Day: No School March 30 – In-service/Workday</p>	<p style="text-align: center;">March 31-June 12</p> <p>Unit 2 Earth's Water (7 weeks) 6.6a-b, d, f, 6.8, 6.9a-c, e-f, 6.1</p> <ul style="list-style-type: none"> ➤ Water chemistry ➤ The role of water in physical and chemical weathering ➤ Importance and management of water resources ➤ Virginia's regional watershed systems ➤ Chesapeake Bay estuary ➤ Watershed health ➤ Water monitoring and analysis ➤ Cost/benefits tradeoffs of conservation policies ➤ Inquiry-based outdoor watershed experience utilizing science process skills <p>Family Life Education: Human Sexuality (2 weeks)</p> <ul style="list-style-type: none"> ➤ <u>Personal hygiene</u> ➤ <u>Endocrine glands responsible for puberty</u> ➤ <u>Review of reproductive structures and their role in reproduction</u> ➤ <u>Sexually-transmitted infections</u> ➤ <u>Benefit of abstinence</u> ➤ <u>Mass media messages</u> <p><i><u>FLE must be taught to students who do not opt out.</u></i></p> <p>April 6-10 – Spring Break April 13 – Inservice/Workday May 25 – Memorial Day June 15 – Workday</p>

Note: Follow this pacing if your school participates in the outdoor watershed experience in the spring. New or re-organized content is underlined.